

From: Moore, Nikki
To: [Bowman, Randal](#)
Cc: [Donald Hoffheins](#); [Allison Ginn](#); [Anita Bilbao](#); [McAlear, Christopher](#); [Jamie Schwartz \(jschwartz01@fs.fed.us\)](#); [Sally Butts](#); [Timothy Fisher](#); [John Ruhs](#); [Kathleen Benedetto](#); [Aaron Moody](#); [Karen Kelleher](#); [Peter Mali](#)
Subject: Re: Additional question on Bears Ears
Date: Wednesday, June 07, 2017 2:46:37 PM
Attachments: [Bears Ears NM Allot WSA Map 6.6.17 \(1\).pdf](#)
[image.png](#)

Hi Randy,

Utah BLM has provided the following map as well to help clarify. We can add it to the google drive if that's helpful.

Nikki Moore

Acting Deputy Assistant Director, National Conservation Lands and Community Partnerships
Bureau of Land Management, Washington D.C.

202.219.3180 (office)

202.740.0835 (cell)

On Wed, Jun 7, 2017 at 3:42 PM, Moore, Nikki <nmoore@blm.gov> wrote:

Hi,

Yes the former: These are acres within the allotment that are also within a WSA (or stated another way, acres within much larger grazing allotments that have WSA designation).

Nikki Moore

Acting Deputy Assistant Director, National Conservation Lands and Community Partnerships

Bureau of Land Management, Washington D.C.

202.219.3180 (office)

202.740.0835 (cell)

On Wed, Jun 7, 2017 at 2:11 PM, Bowman, Randal <randal_bowman@ios.doi.gov> wrote:

Thank you. One further question for clarification: does "WSA acres" mean acres within the allotment that are also within a WSA, or does it show total acres of the WSA within which there is a grazing allotment of a size not shown?

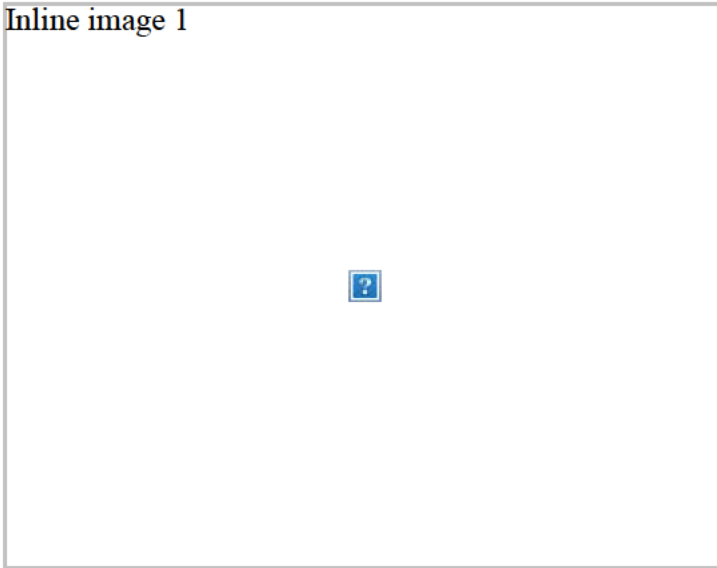
Given that Lockhart shows 2088 acres, I would presume that the chart shows the former alternative, since as I understand it the minimum size for a WSA is 5000 acres, but I would like to be sure.

On Wed, Jun 7, 2017 at 1:05 PM, Moore, Nikki <nmoore@blm.gov> wrote:

Hi Randy,

You had asked whether grazing was allowed within Wilderness Study Areas within the BENM. Here is some additional, more specific information regarding livestock grazing allowed within Bears Ears NM and Wilderness Study Areas:

Inline image 1



Nikki Moore

Acting Deputy Assistant Director, National Conservation Lands and Community Partnerships

Bureau of Land Management, Washington D.C.

202.219.3180 (office)

202.740.0835 (cell)

On Sun, Jun 4, 2017 at 6:45 PM, Bowman, Randal <randal_bowman@ios.doi.gov> wrote:

Is grazing allowed in the WSAs? The map is not clear due to overlays

Bears Ears National Monument

Monticello Field Office

BLM - Grazing Allotment / WSAs



Carling
06/06/17

Legend

Designation

- National Monument
- WSA

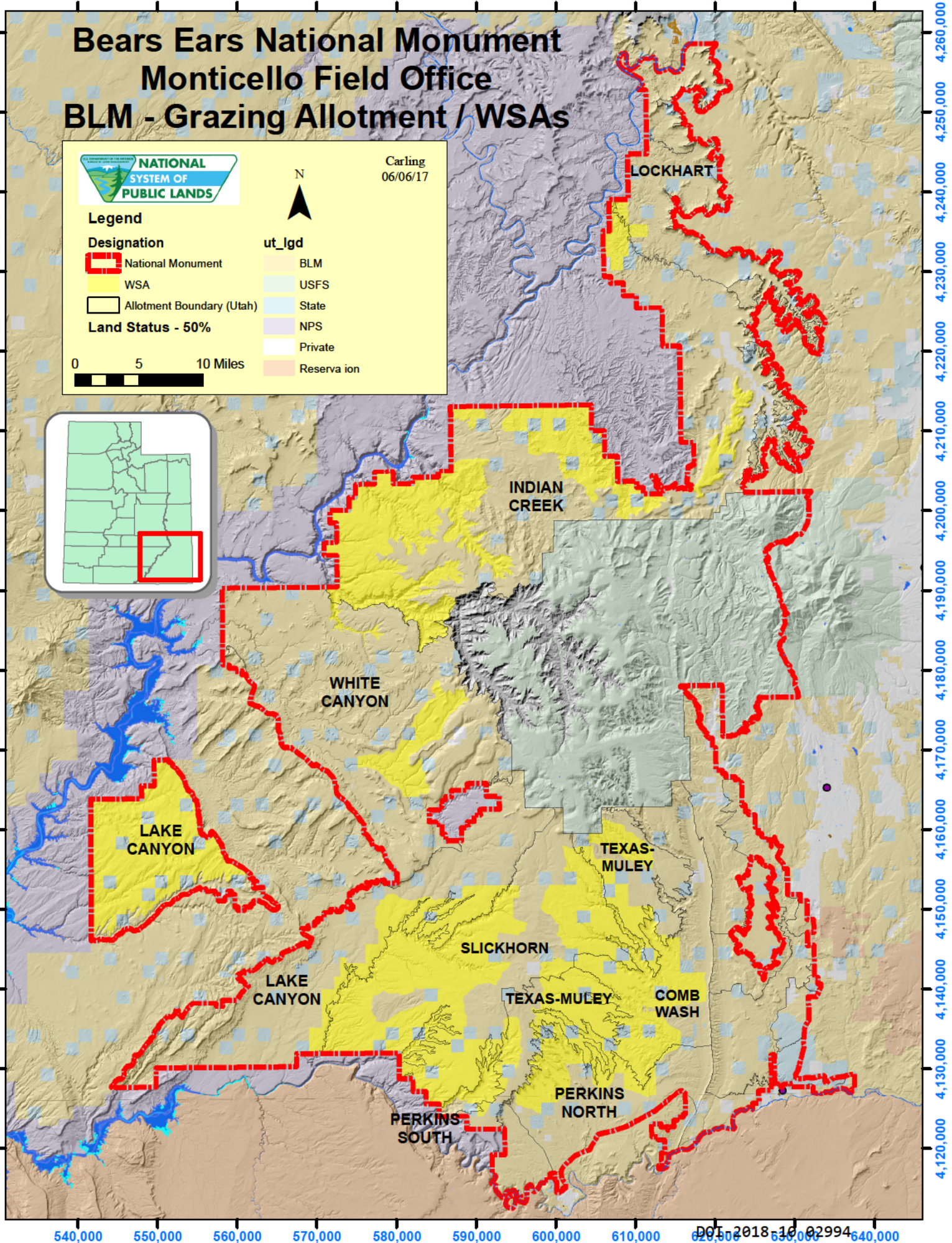
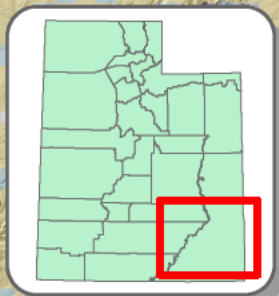
Allotment Boundary (Utah)

Land Status - 50%

0 5 10 Miles

ut_lgd

- BLM
- USFS
- State
- NPS
- Private
- Reserva ion



Allotments within Bears Ears NM with Wilderness Study Areas (WSA)

Allotment	WSA Acres
COMB WASH	36,413.2
INDIAN CREEK	100,256.7
LAKE CANYON	71,522.7
LOCKHART	2,088.7
PERKINS NORTH	16,949.1
PERKINS SOUTH	7,787.1
SLICKHORN	92,701.6
TEXAS-MULEY	34,930.9
WHITE CANYON	16,622.5
Total	379,272.5

DOI-2018-10 02995